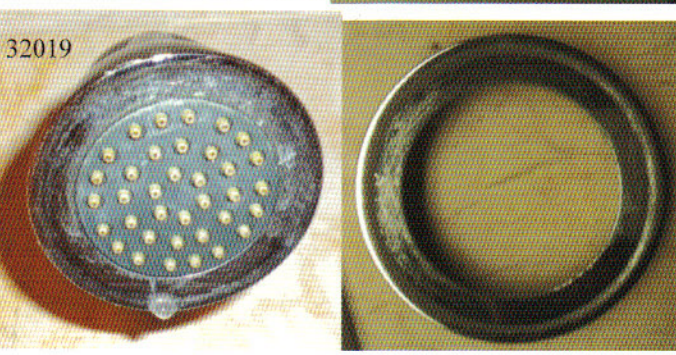
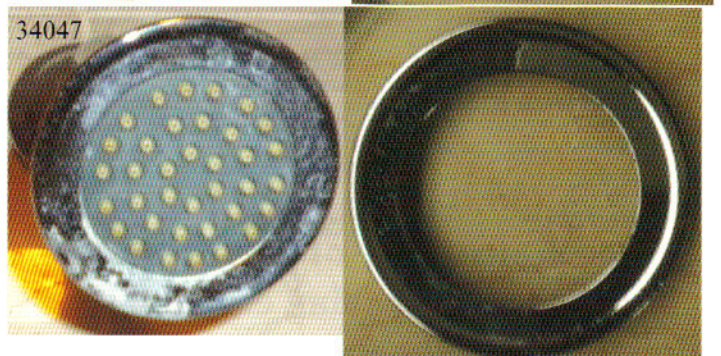
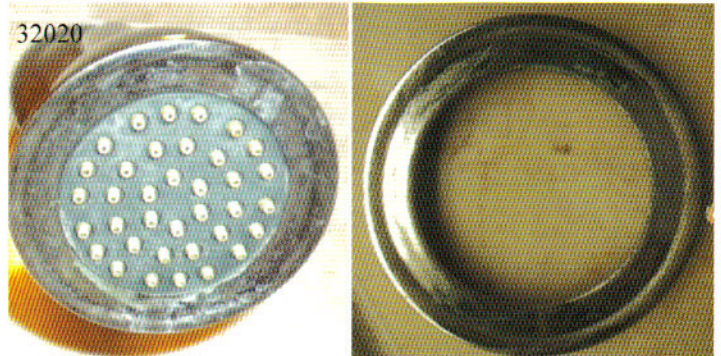


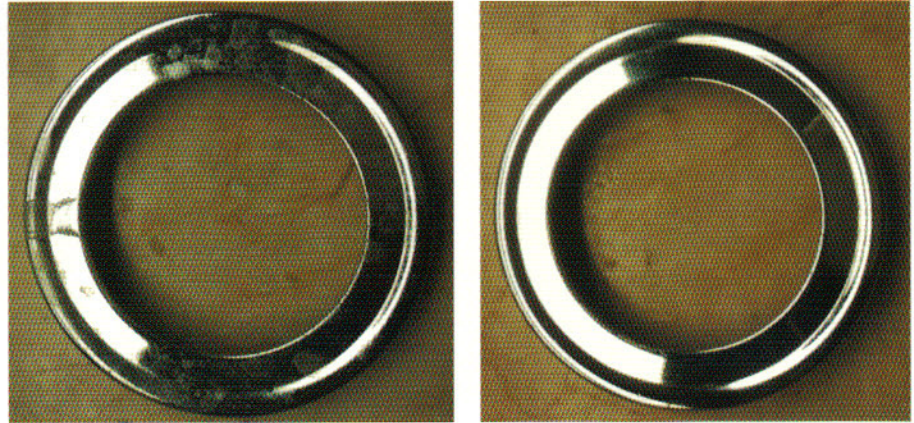
TRIAL OF AQUA-REX AT 2,700 ROOM RESORT HOTEL & CASINO ON THE LAS VEGAS STRIP

This picture shows the Aqua-Rex WK5 which was installed on a 6" cold riser after the booster set in the ground floor plant room. Photographs were taken of the shower heads in a selection of rooms on December 30th 2010 and show chrome rings with encrusted scale that would normally only be removed by acid cleaning. The same rooms were visited on January 26th 2011. The shower rings were removed and wiped with a soft cloth. The remaining scale was then rubbed with a plastic abrasive cleaning pad. Whereas previously the surface scale was impossible to remove with anything other than acid, it was now possible to wipe away more than 90% of it with a soft cloth. The pictures reproduced below show the shower heads from each room. The pictures on the left were taken in December and those on the right in January. The room numbers are shown in the top left corner.



On 29th March 2011 the hotel occupancy was very high and we were only able to inspect the shower head in 32020. Pictures were taken of the chrome ring in the condition it was taken off the head. A picture was taken again after wiping with a soft towel and removing a little scale with the thumb nail. The results showed that the ring cleaned up completely as it had done on January 26th, two months earlier.

The conclusions that can be drawn from this trial is that Aqua-Rex is highly effective at removing old scale and stopping new scale from forming.



Prior to installation of Aqua-Rex the shower heads were heavily contaminated with encrusted scale that was highly resistant to ordinary cleaning measures used by the house keepers. This scale detracted from the appearance of the guest suites and was unhygienic.

After installation of Aqua-Rex, the old scale is easily removed and new scale does not form as an encrustation. Any deposits can be removed very quickly and simply using normal house keeper's cleaning materials.

The result of using Aqua-Rex is an improvement in the appearance of guest suites, a reduction of hours spent removing encrusted scale and a reduction in the use of cleaning materials. This represents improved quality and appearance as well as reduced costs for an outlay of less than \$8,000.

Room 32020 shower head on March 29th 2011. Compare this picture with the original shower head taken on December 30th 2010.

